



## Northenden Community School

Determination Ambition Equality

### DO WE KNOW OUR COMMUNITY?



We want to be sure that we really know our school community to enable us to support our children and their families as best we can. There are various interventions, teaching resources, opportunities and

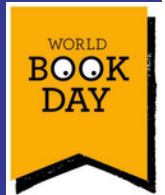
funding the school can use to ensure we meet the needs of every child including those who qualify for Free School Meals, have English as an Additional Language or where a child is a Young Carer for their parent or sibling. Please follow the link to complete the form.

[Form link](#)

### WORLD BOOK DAY

We will be celebrating World Book Day on Friday 7th March, so everyone can get involved and dress up as their favourite book character or in their cosy pyjamas. Please see the reading letter sent out before the half term break for more information about how we are celebrating reading this half term.

[Letters on website](#)



### COMMUNITY NEWS



The school community raised a fantastic £200 for Place2Be. Thank you for your generosity. As a school we are committed to supporting the Mental Health and Wellbeing of all our pupils. Please visit the new Family Support and Guidance section of our School Website [Family Support & Guidance](#)

#### PTA

All our children are invited to our PTA disco on **Friday 14th March!**  
**£3 Payment is via ParentPay**  
**Nur, Rec, Y1 & 2 - 17:30 - 18:30**  
**Y3, 4, 5 & 6 - 18:45 - 19:45**  
If you are able to give a little of your time to support the event, even better! Please email [friends@northenden.manchester.sch.uk](mailto:friends@northenden.manchester.sch.uk)



### VOLUNTEERS

We've had a few volunteers start working with our school since the last newsletter, which is brilliant! If any of our families are able to offer their time or skills to support our school community then please do get in touch. For more information visit <https://www.northendenprimary.co.uk/parents/volunteers>  
If you have any questions email or phone the school office.



### PARENT/ CARER EVENING

Our Parent and Carer Consultation Evenings are on Tuesday 1st April and Thursday 3rd April. These are an opportunity to share your child's achievements and areas for development. It is more effective for your child to hear first hand how they are getting on in school. Therefore, we want our parents and carers to bring their children to the meeting with them. This means there will be no creche facility.



### COMMUNICATION

We are pleased that we have managed to get 75% of our families signed up to reachmoreparents already. We are sorry that some of you have experienced some technical difficulties and we are keen to hear from you as we want to ensure everyone receives all of our communication. We will continue to use Parentpay, whilst we work with weduc to resolve these issues.

**reach more parents**  
by weduc

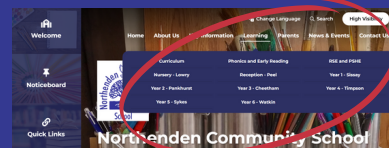
## DATES FOR YOUR DIARIES

- Wed 26th to Fri 28th Feb** - Book Fair - 3.05pm - 3.30pm
  - Friday 7th March** - World Book Day 'Dress as your favourite book character or come in your P.J.s'
  - Wednesday 19th March** - Academy Consultation Evening at 5pm.
  - Friday 21st March** - Comic Relief - Children can wear red noses and accessories but should still be in uniform. School will not be asking for any donations.
  - Tuesday 1st & Thursday 3rd April** - Parent/ Carer Consultation Evening. Letter to follow.
  - Friday 4th April** - School closes for Easter Holiday
  - Tuesday 22nd April** - School reopens for Summer 1
- You can check our [Website Calendar](#) for updates too.



## CURRICULUM

Please remember all information relating to the curriculum being taught in your child's class can be found on the class page of the school website. [Link to class pages on the website](#)



## BEHAVIOUR POLICY

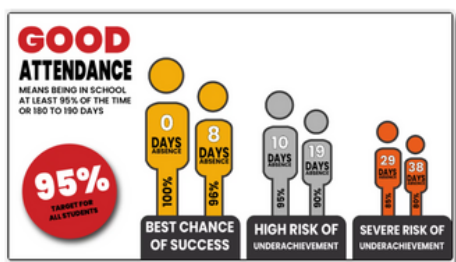
We are in the process of developing our new behaviour policy. Part of this work relates to *The Zones of Regulation*, which supports children to welcome their full range of emotions and what that feels like in their bodies. In doing so, children better understand their emotions and together learn to explore tools and strategies to help them to regulate and be ready to learn. The children have been introduced to the different *Zones*, which creates a common language for everyone at school. The Zones of Regulation methodology and teaching approach is built upon

decades of foundational neuroscience and cognitive research, integrating evidence-based practices from a large range of theories and frameworks. Ask your children what they understand so far about the zones of regulation and the different emotions which are associated with each colour.



## ATTENDANCE

Our Whole School target is 96%.  
 Our Whole School Attendance from September is 95.2%  
 Well done to Year 2 & 4, who both achieved a week of 100% last half term.  
 Life is complicated and there can be many issues resulting in a child's absence. Please make sure you communicate with your child's class teacher if you are having difficulties relating to lateness or school attendance. We want to work with our families to improve our children's attendance at school.



## E-SAFETY

**If you are looking for tips, advice, guides and resources to help keep your child safe online then the UK Safer Internet Centre is a useful place to start.**

As a parent or carer you play a key role in helping your child to stay safe online.

You don't need to be an expert on the internet to help keep your child safe online. Their advice and resources are here to support you as you support your child to use the internet safely, responsibly and positively.

<https://saferinternet.org.uk/guide-and-resource/parents-and-carers>

